

**emexact<sup>®</sup>**

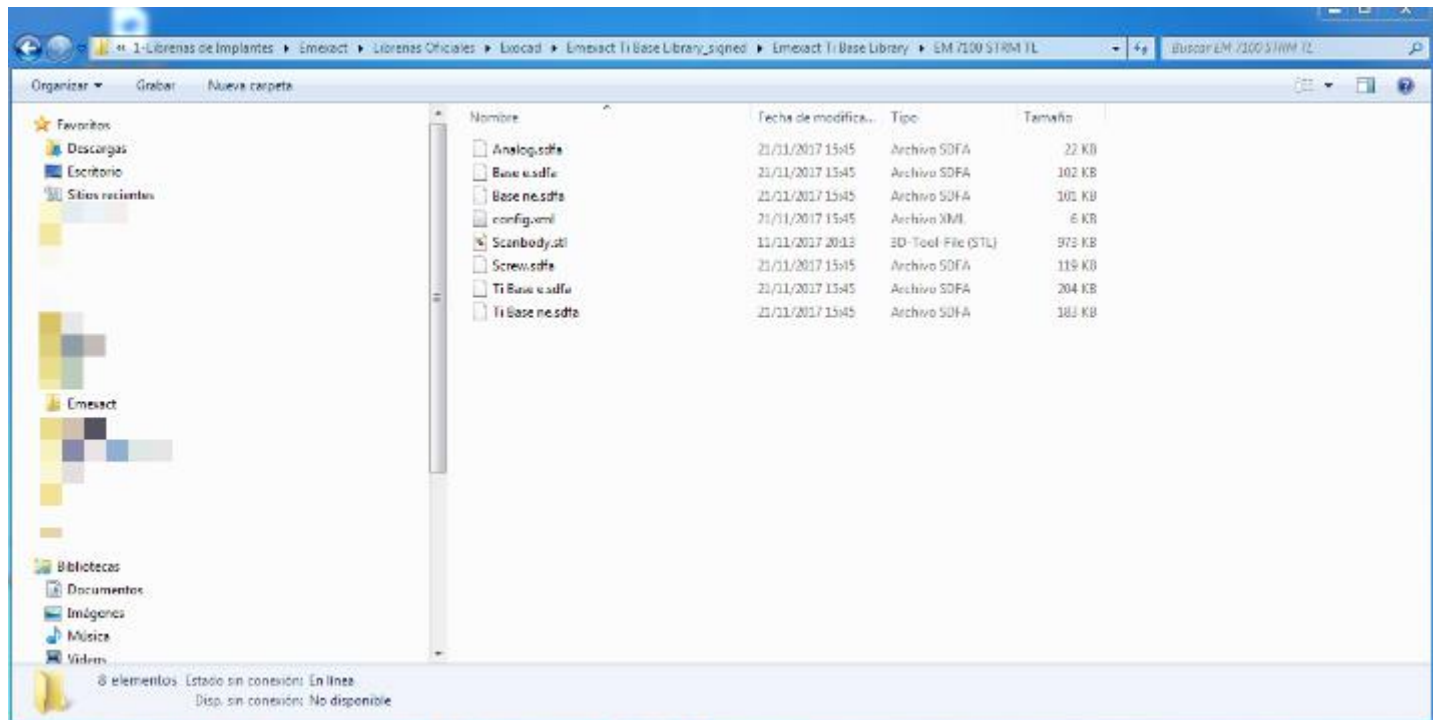
Instructions for import  
EM Exact Implant Library into Exocad software

**exocad**

# How to import the EM Exact Library

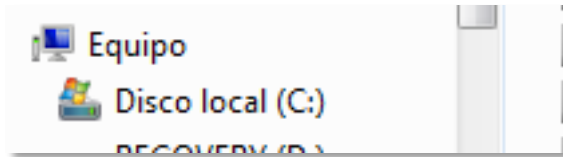
## 1. Download the Library form EM Exact website

*The Library in the folder should contain the following files:*



# How to import the EM Exact Library

1. Local hard drive (C:)



Info: possible folder content.  
*may change in each case*

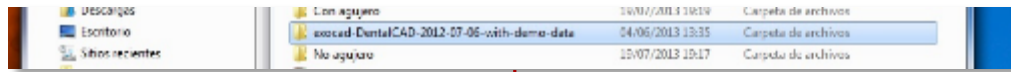
2. Folder *Program files (x86)*



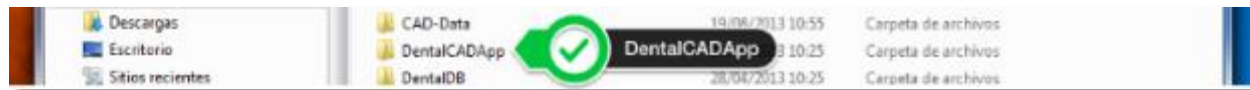
3. Folder *exocad DentalCAD*



# How to import the EM Exact Library



## 4. Content Folder exocad DentalCAD



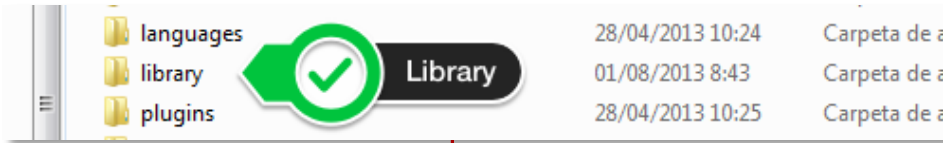
## 5. Content *DentalCADApp*



## 6. Folder *library*



## How to import the EM Exact Library



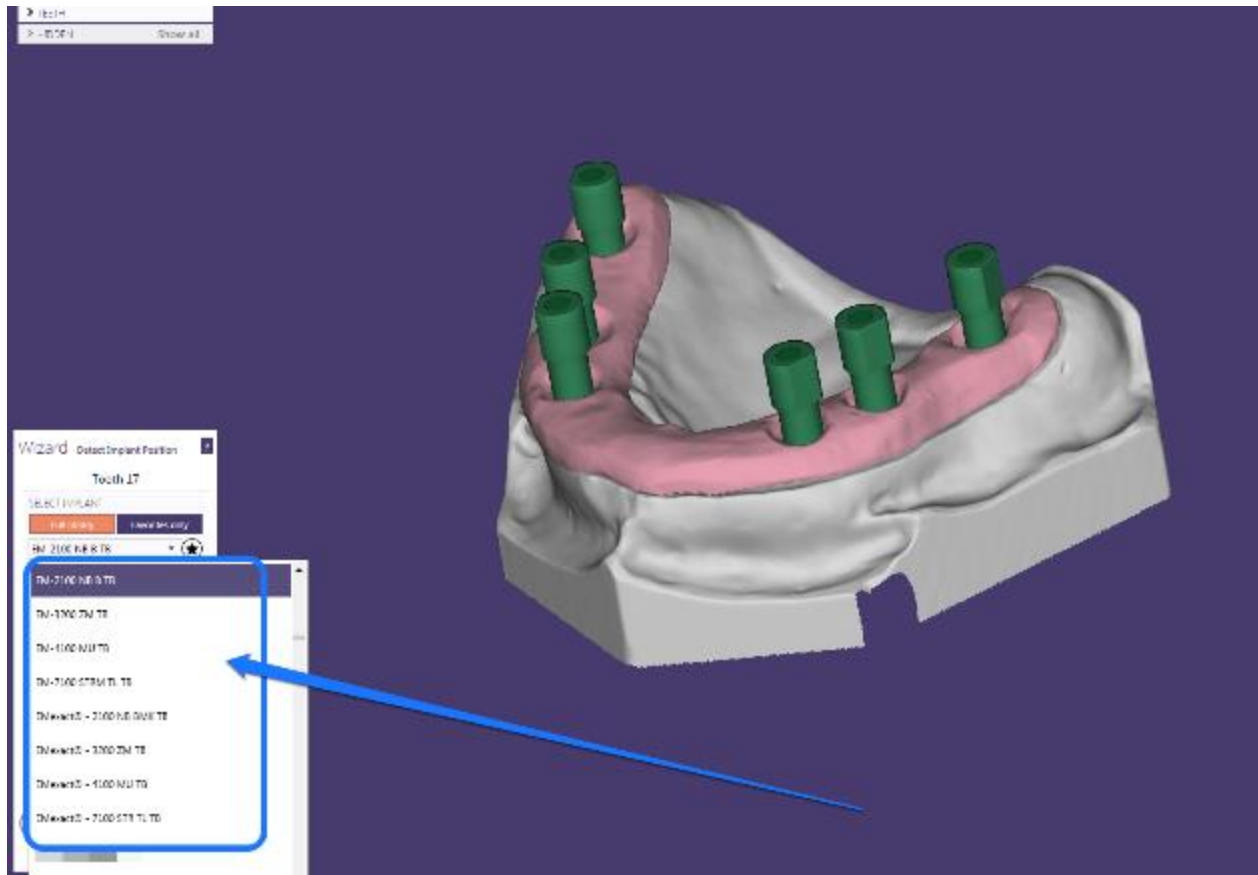
8. Select folder EM Exact Library and copy it into the folder *implant*

That's all. Easy.

7. Content Folder library



## Display of the imported EM Exact Library in *the Wizard selection menu*



# Thanks for Watching

EM Exact Support