

emexact[®]

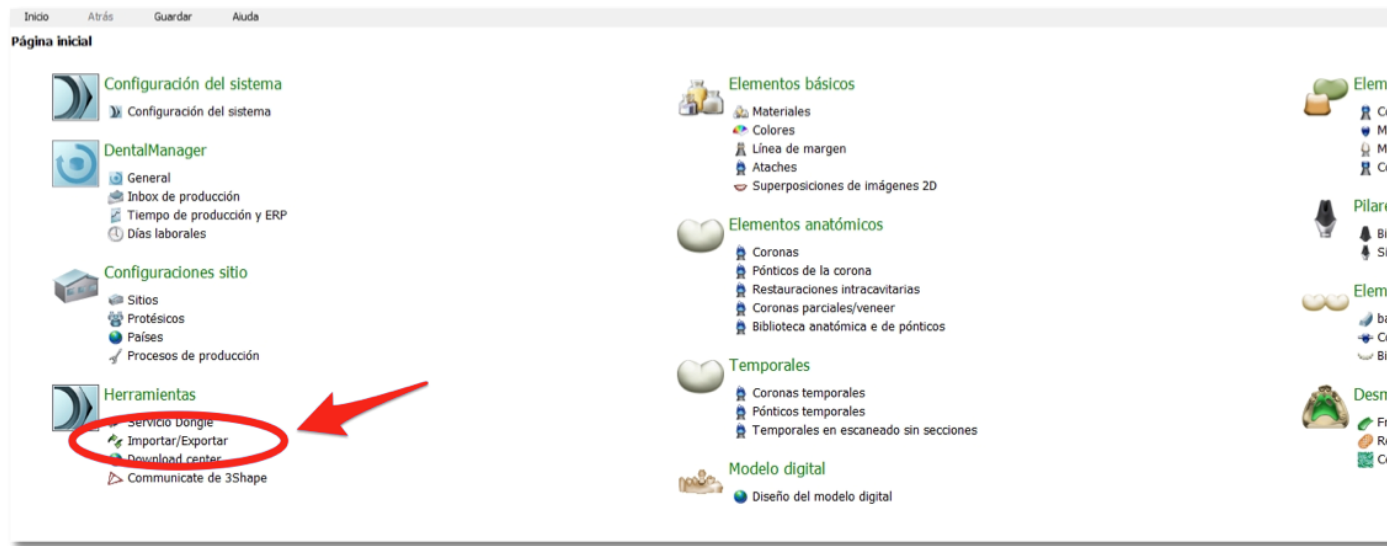
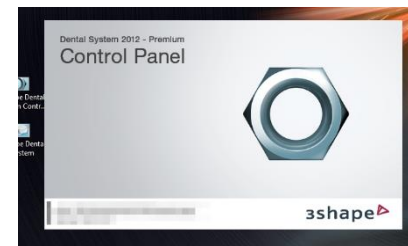
Instructions for import of the implant library
EM Exact in 3Shape Software

3shape 

How to import the EM Exact Library

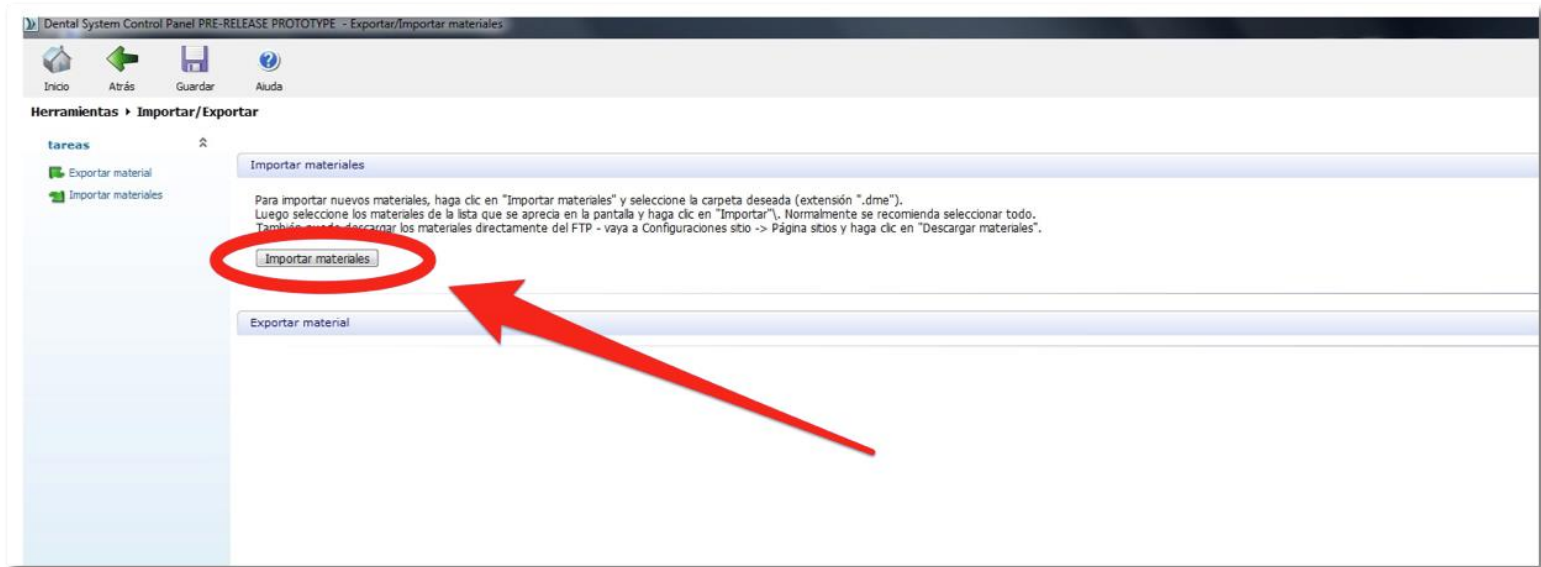
Library is imported through the *Control Panel* of your 3Shape system

1. Choose *Import/Export*



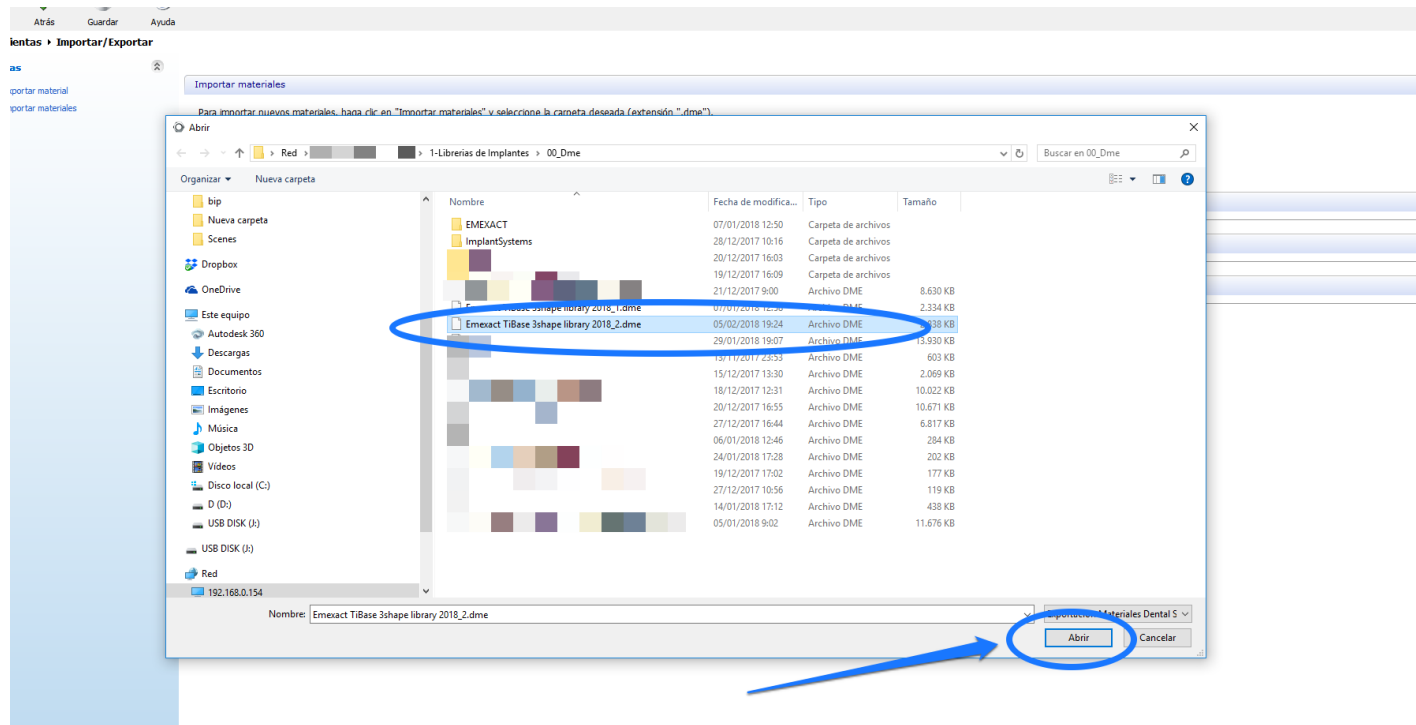
How to import the EM Exact Library

2. Choose *import material*



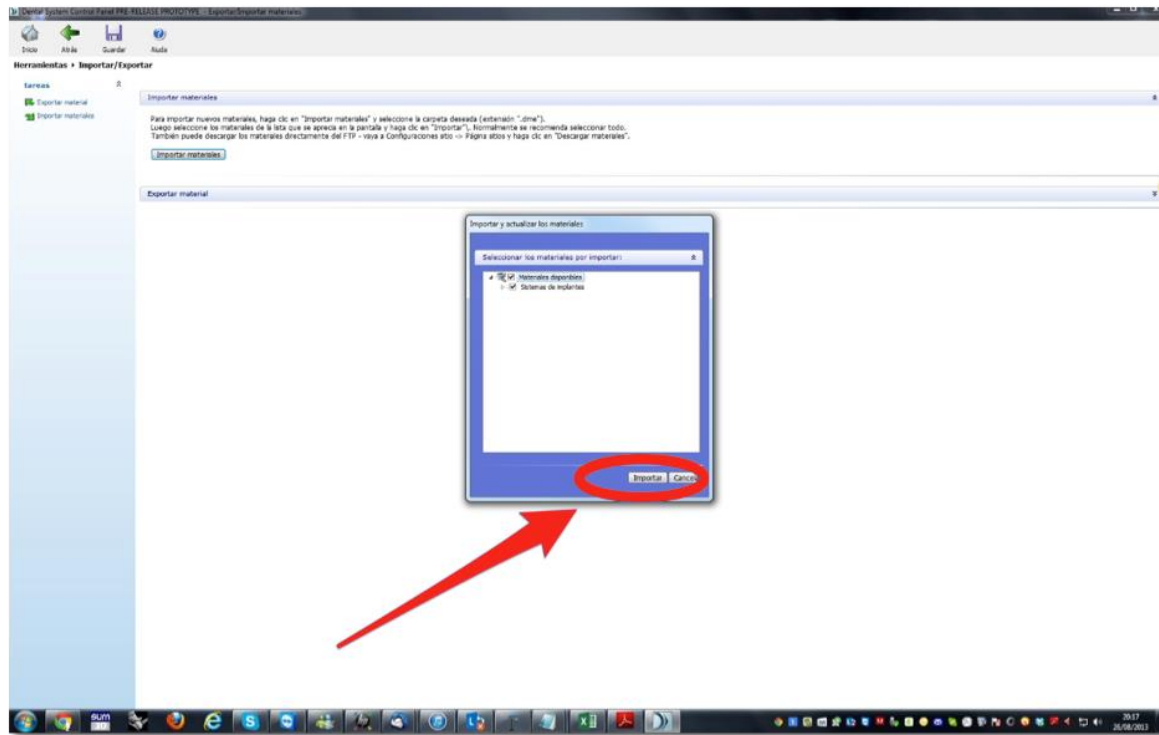
How to import the EM Exact Library

3. Choose and open EM Exact library



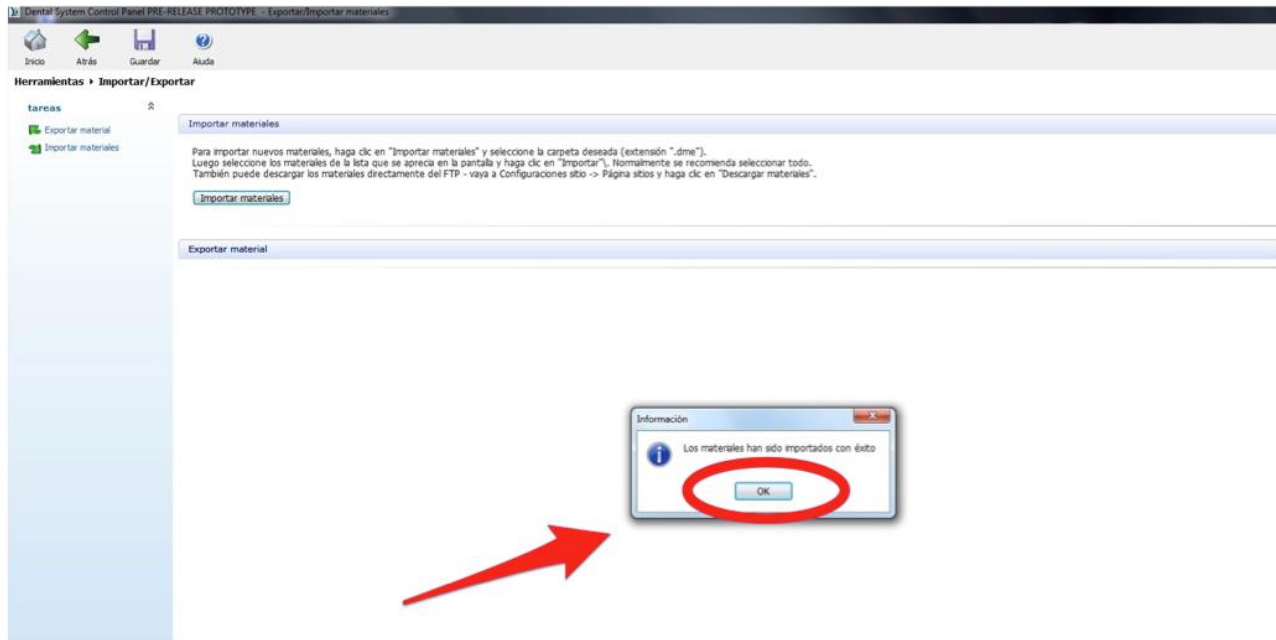
How to import the EM Exact Library

4. Import the EM Exact library



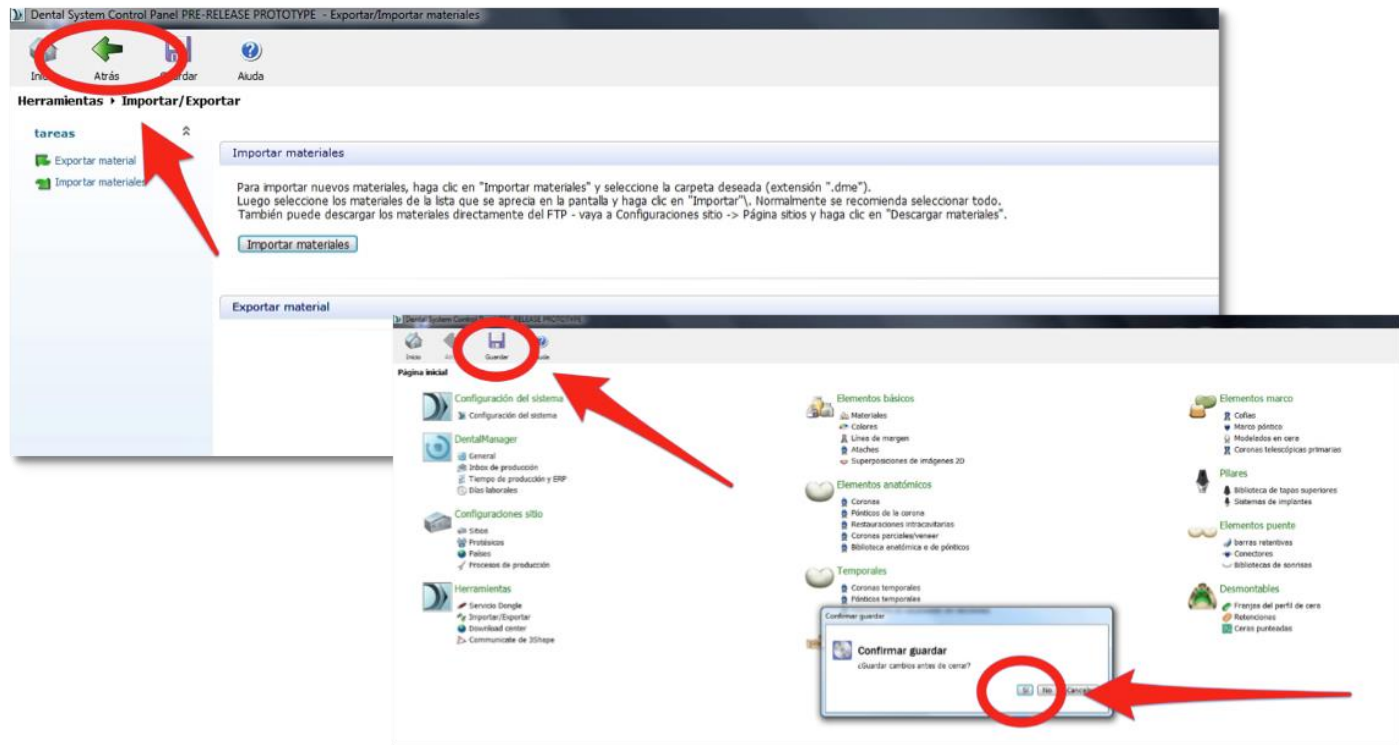
How to import the EM Exact Library

5. Confirm succesful import



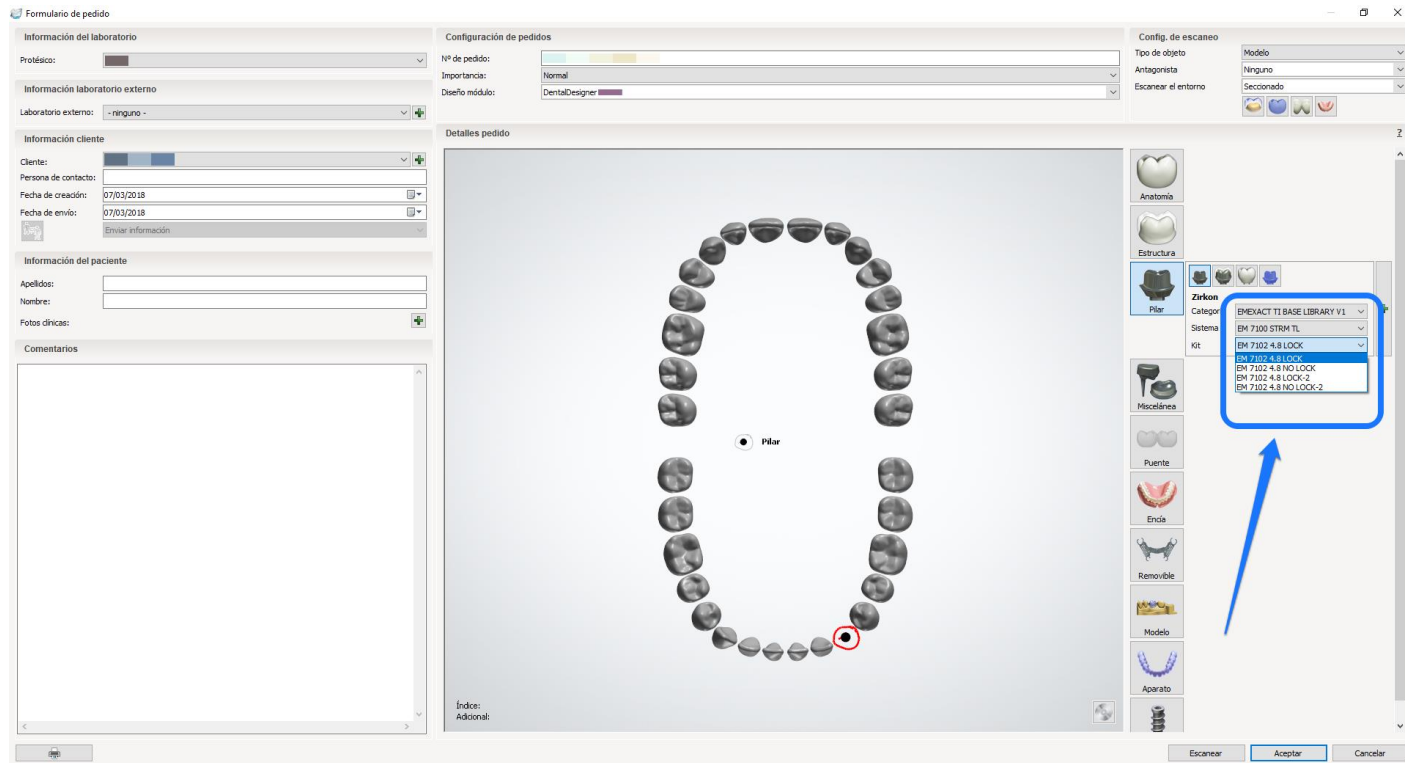
How to import the EM Exact Library

6. Save Target 3D and confirm



Display of the imported EM Exact Library in *the 3Shape Manager*

That's all. Easy.



Thanks for Watching

EM Exact Support